

DRAWING NUMBER
52/36

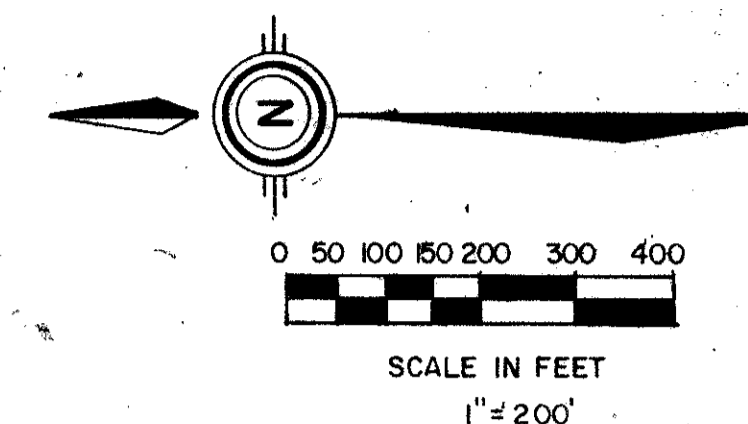
THE POLO CLUB PLAT I

A P.U.D.

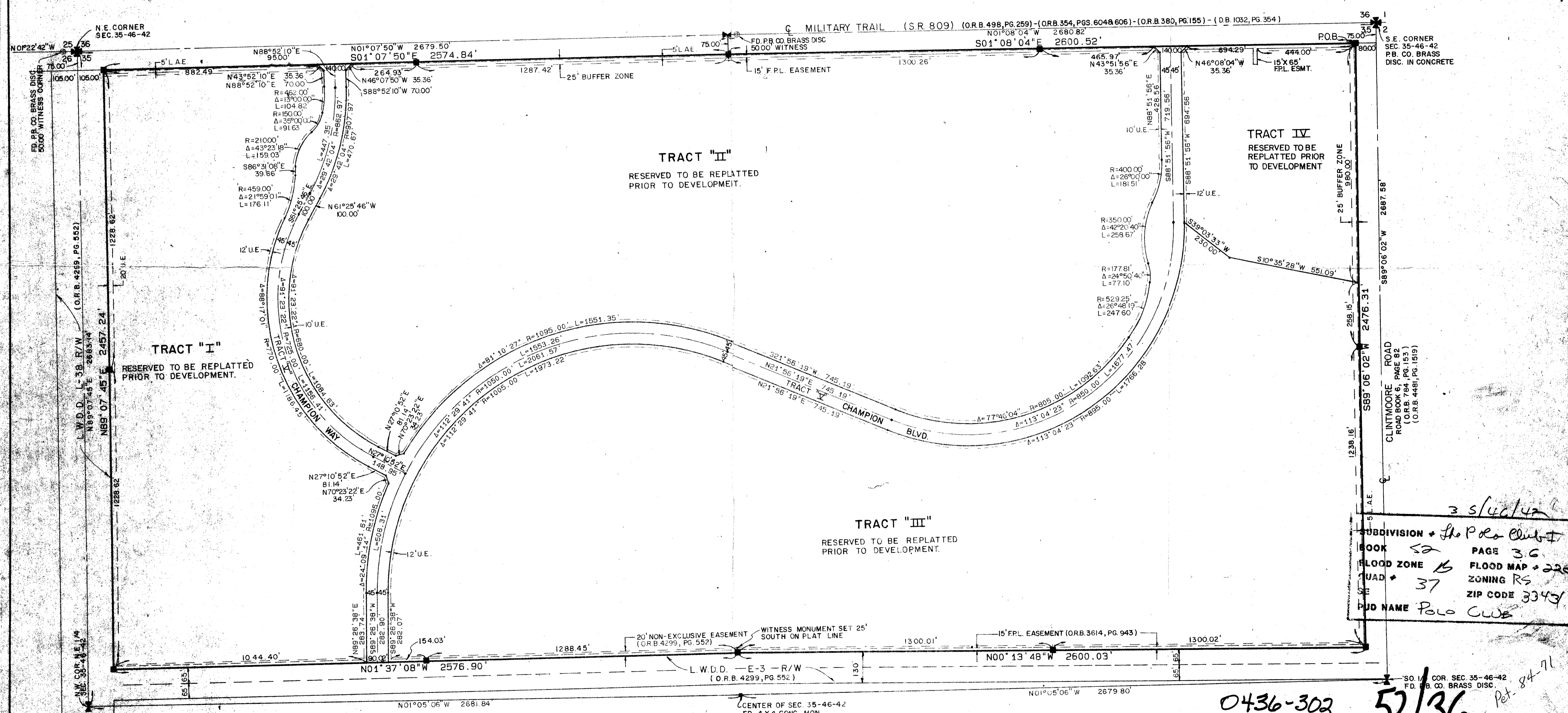
SITUATE IN SECTION 35, TOWNSHIP 46 SOUTH, RANGE 42 EAST
PALM BEACH COUNTY, FLORIDA

1985

SHEET 2 OF 2



STATE OF FLORIDA
COUNTY OF PALM BEACH
THIS PLAT WAS RECORDED AT _____
THIS _____ DAY OF _____
AD, 1985 AND DULY RECORDED
IN PLAT BOOK _____ ON PAGES _____
AND _____
JOHN B. DUNKLE, CLERK
BY: _____, D.C.



3/14/85
SUBDIVISION - The Polo Club
BOOK 52 PAGE 36
FLOOD ZONE 6 FLOOD MAP - 2250
QUAD - 37 ZONING RS
ZIP CODE 3343
PUD NAME Polo Club

0436-302 **52/36** Pet. 84-71

Meridian Surveying and Mapping Inc.
WEST PALM BEACH, FLORIDA

DRAWN	MHC/MEH	DATE	JAN, 1985
CHECKED	MAM	SCALE	1"=200'
DRAWING NO.	84-P-108		

THE POLO CLUB PLAT I
A P.U.D.

DRAWING NUMBER

DRAWING NUMBER

DRAWING NUMBER

PLAN HOLD CORPORATION • IRVINE, CALIFORNIA
RECORDED BY NUMBER 07349

PLAN HOLD CORPORATION • IRVINE, CALIFORNIA
RECORDED BY NUMBER 07349

PLAN HOLD CORPORATION • IRVINE, CALIFORNIA
RECORDED BY NUMBER 07349